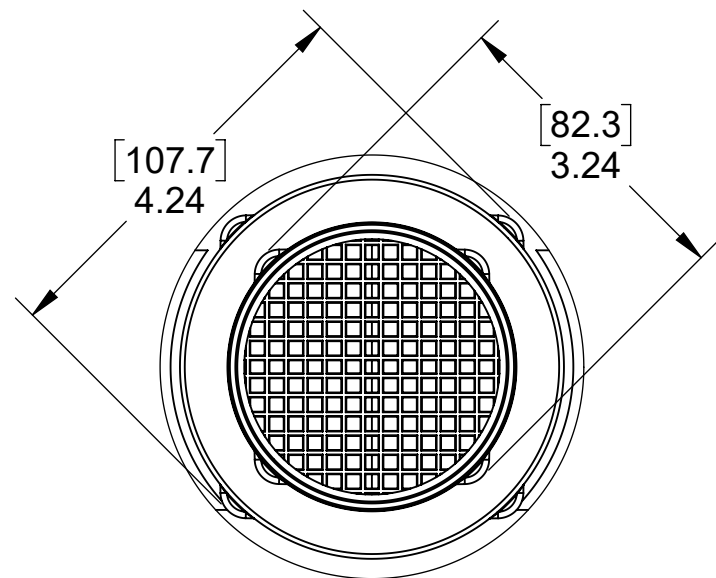
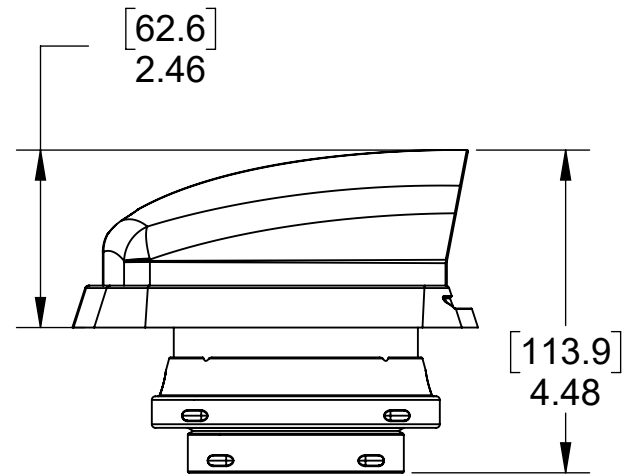
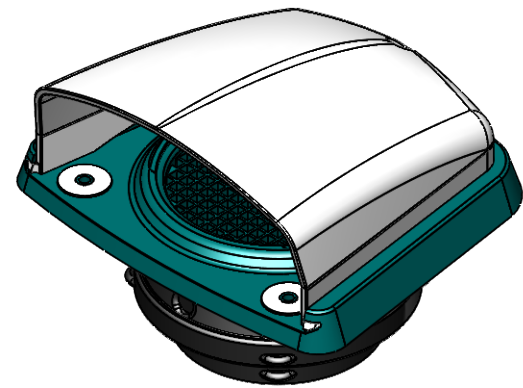
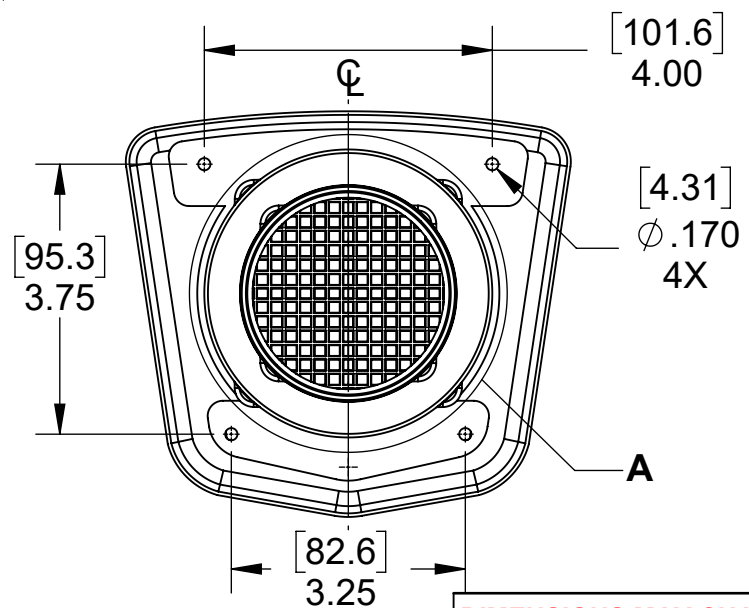
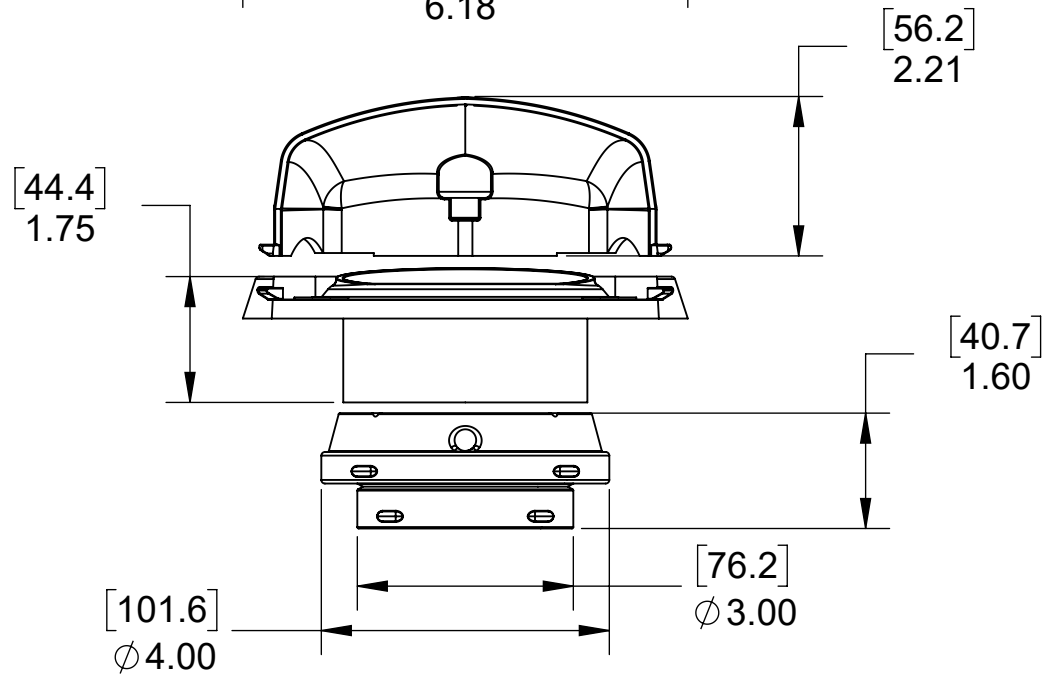
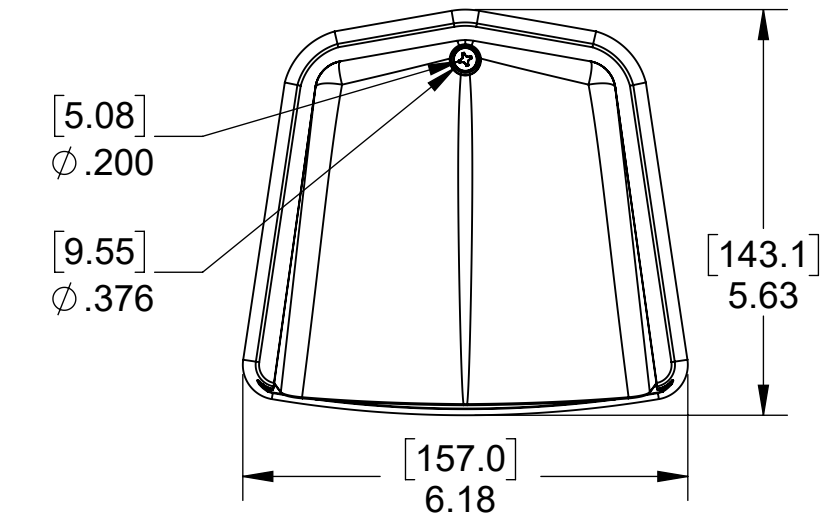


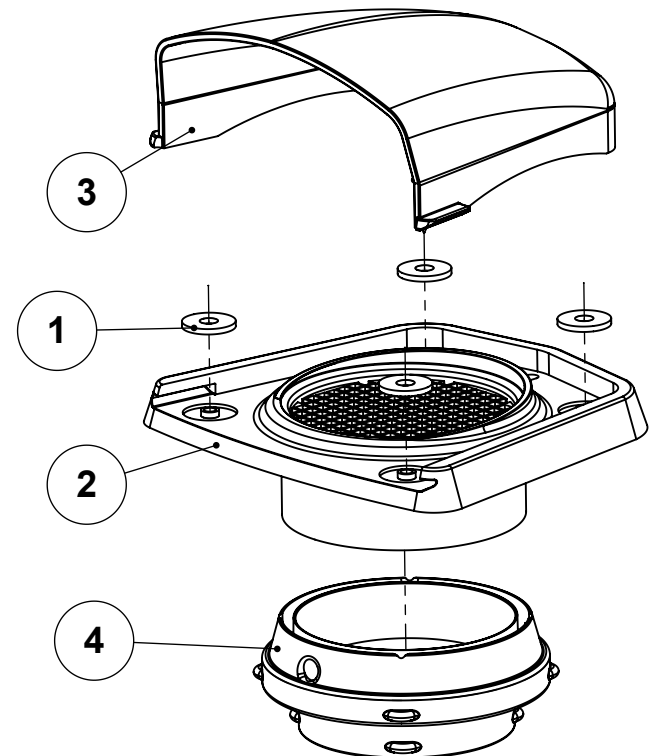
ITEM	PART NUMBER	REV	DESCRIPTION	QTY
1	MBC-2758-005	B	WASHER	4
2	MBC-2758-003	F	VENT BASE	1
3	MBC-2758-004	F	VENT COVER	1
4	MBC-2758-006	C	VENT HOSE ADAPTER	1



DETAIL A
SCALE 1 : 2



ISO VIEW



WEIGHT: 1.65 LBS.

MATERIAL: SEE DETAIL DRAWING

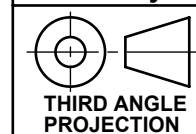
FINISH: SEE DETAIL DRAWING

DIMENSIONS MAY CHANGE WITHOUT NOTICE



CREATION DATE:
12-15-2014

CREATED BY: dlay

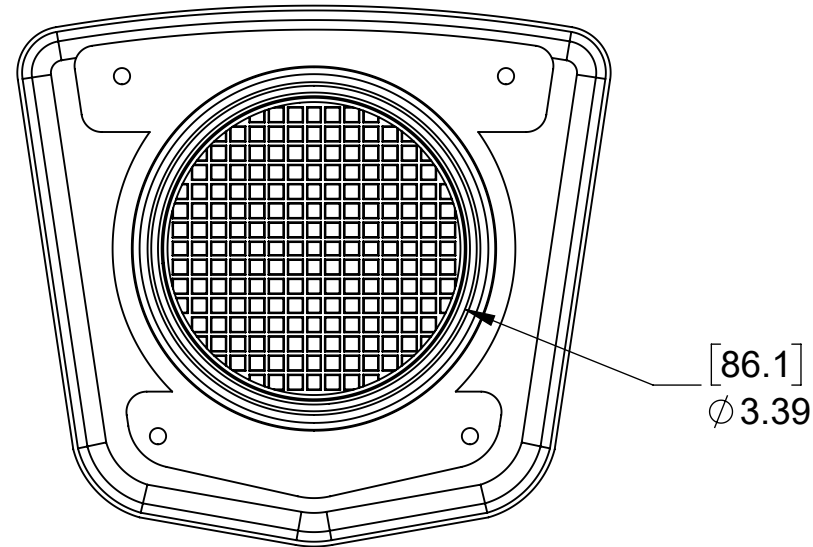


FILE NAME:
Y_VT-2758-A03

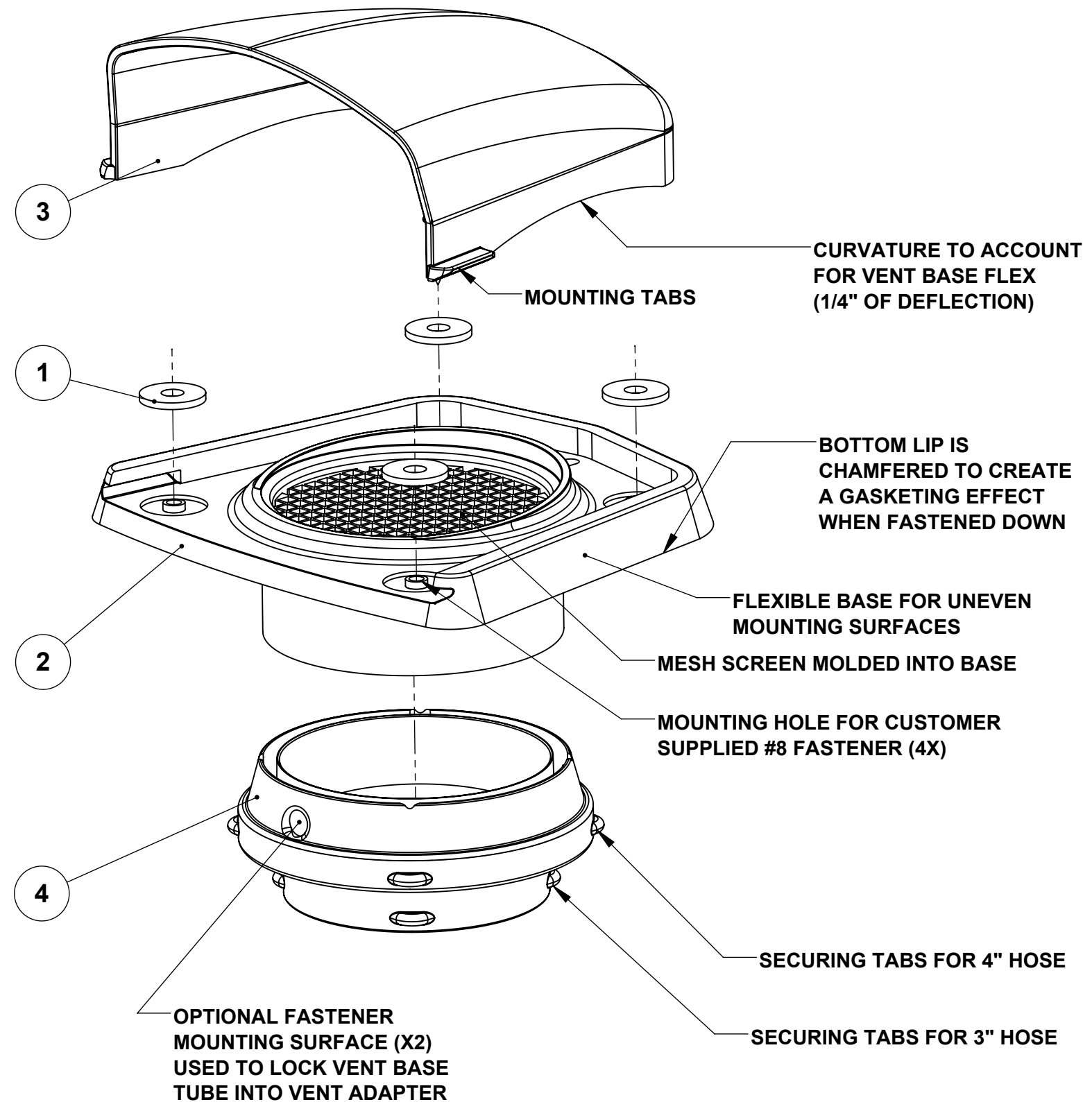
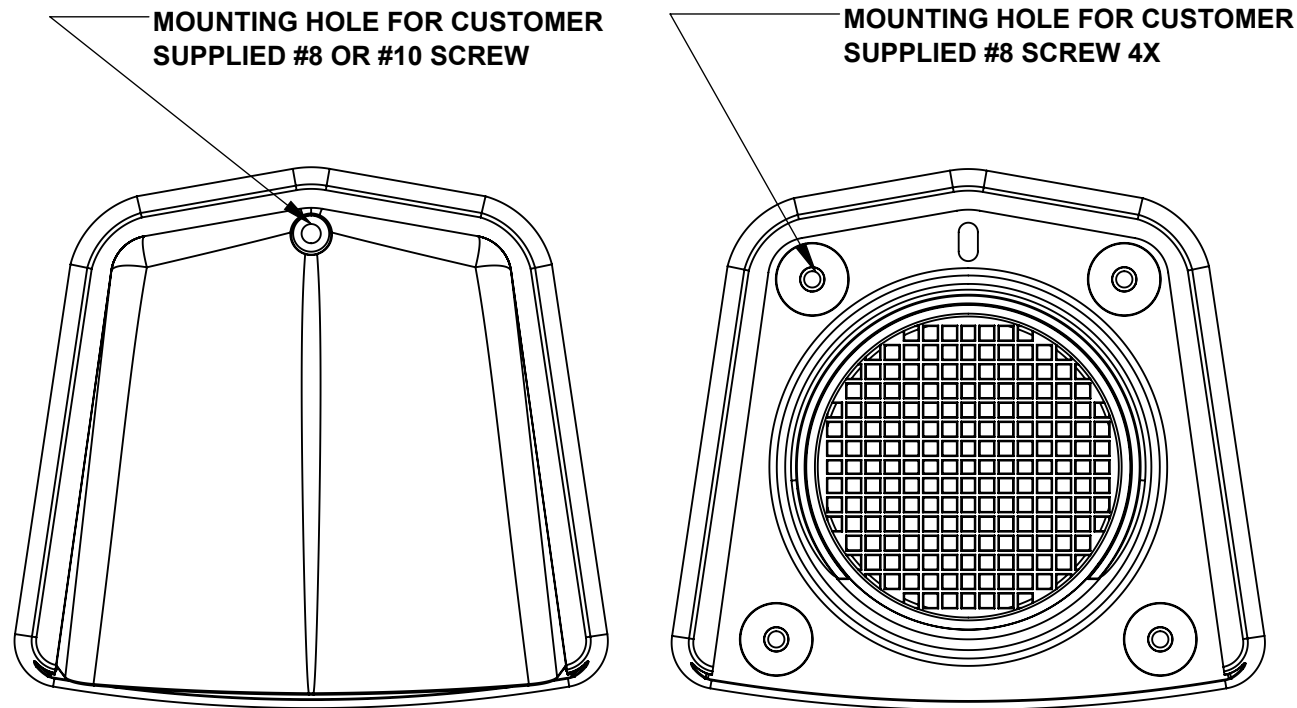
DESCRIPTION:
VENT ASSEMBLY

PART NUMBER:
VT-2758-A03


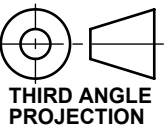
REV
K



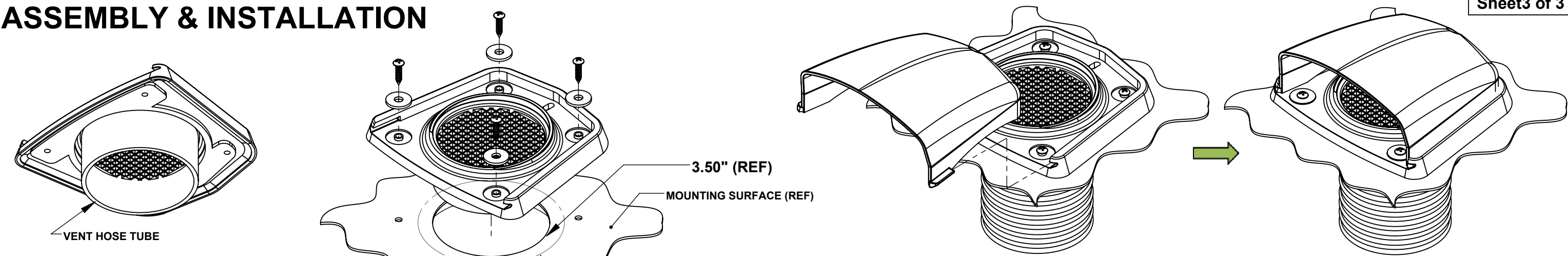
RECOMMENDEED HOLE CUTOUT IS 3.50" Ø



WEIGHT: 1.65 LBS.
MATERIAL: SEE DETAIL DRAWING
FINISH: SEE DETAIL DRAWING

DIMENSIONS MAY CHANGE WITHOUT NOTICE		CREATION DATE: 12-15-2014	FILE NAME: Y_VT-2758-A03
 AUSTIN HARDWARE & SUPPLY, INC. SECURING SOLUTIONS FOR YOUR BUSINESS www.austinhardware.com		CREATED BY: dlay	DESCRIPTION: VENT ASSEMBLY
		 THIRD ANGLE PROJECTION	PART NUMBER: VT-2758-A03
			REV K

ASSEMBLY & INSTALLATION



STEP #1:

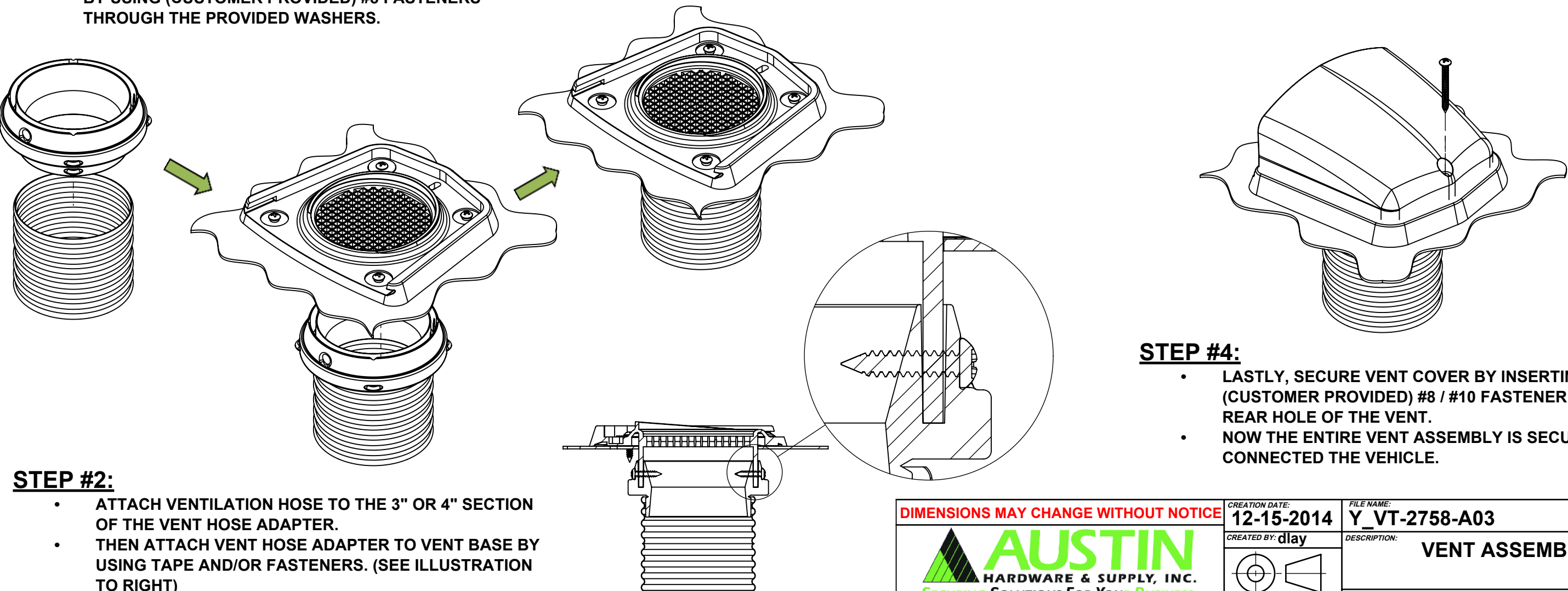
- PREPARE MOUNTING AREA BY CREATING A CUTOUT FOR THE VENT BASE TUBE TO PASS THROUGH. (RECOMMENDED DIAMETER IS 3.50")
- BASE WILL CONFORM TO NON-FLAT MOUNTING SURFACE
- ATTACH VENT BASE TO VEHICLE MOUNTING SURFACE BY USING (CUSTOMER PROVIDED) #8 FASTENERS THROUGH THE PROVIDED WASHERS.

NOTE

- IF INSTALLING ADAPTER PRIOR TO INSTALLING VENT:
- 4.25" ϕ CUTOUT RECOMMENDED.
 - IT IS CRITICAL THAT YOU CENTER THE VENT BEFORE MOUNTING TO ENSURE ALL FASTENERS ENGAGE MOUNTING SURFACE.

STEP #3:

- ATTACH VENT COVER BY SLIDING IT BACKWARDS INTO THE VENT BASE.
- MAKE SURE TO ALIGN THE MOUNTING TABS TO THE MOUNTING SLOTS.



STEP #2:

- ATTACH VENTILATION HOSE TO THE 3" OR 4" SECTION OF THE VENT HOSE ADAPTER.
- THEN ATTACH VENT HOSE ADAPTER TO VENT BASE BY USING TAPE AND/OR FASTENERS. (SEE ILLUSTRATION TO RIGHT)

STEP #4:

- LASTLY, SECURE VENT COVER BY INSERTING (CUSTOMER PROVIDED) #8 / #10 FASTENER IN THE REAR HOLE OF THE VENT.
- NOW THE ENTIRE VENT ASSEMBLY IS SECURELY CONNECTED THE VEHICLE.

DIMENSIONS MAY CHANGE WITHOUT NOTICE

AUSTIN
HARDWARE & SUPPLY, INC.
SECURING SOLUTIONS FOR YOUR BUSINESS
www.austinhardware.com

CREATION DATE:
12-15-2014

CREATED BY: dlay

THIRD ANGLE
PROJECTION

FILE NAME:
Y_VT-2758-A03

DESCRIPTION:
VENT ASSEMBLY

PART NUMBER:
VT-2758-A03

REV
K