

# Drawer Release *Lite*

Low-Cost - Quick Install - One Hand Operation



36" Max handle length  
Also available in a knurled aluminum extrusion handle

## BOLT-ON

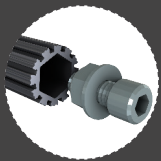
Installs directly to Austin's 7650 drawer slides using standard zinc plated 1/4-20 nuts and bolts.

## QUICK INSTALL

Does not require a pro to properly install. Paired with our 7650 drawer slides, this install is quick and easy.

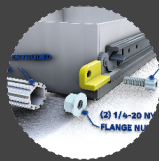
## ONE-HANDED ACTUATION

Ensures a convenient one-handed operation similar to our Front Drawer Release (FDR) system.



## CONVENIENT KIT

One kit and you're all set. Standard 1/4-20 fasteners and aluminum extrusion.



## SIMPLE DESIGN

Designed to plug and play directly into Austin's 7650 drawer slide family.



## FUNCTIONAL

Simple and sleek, this drawer release is more than functional - it's intentional.



## COST-EFFECTIVE

The low cost drawer release option you've been looking for.

**CONTACT YOUR AUSTIN  
SALES REP TODAY!**



950 N.W. Technology Drive  
Lee's Summit, MO 64086



(800) 821-3520

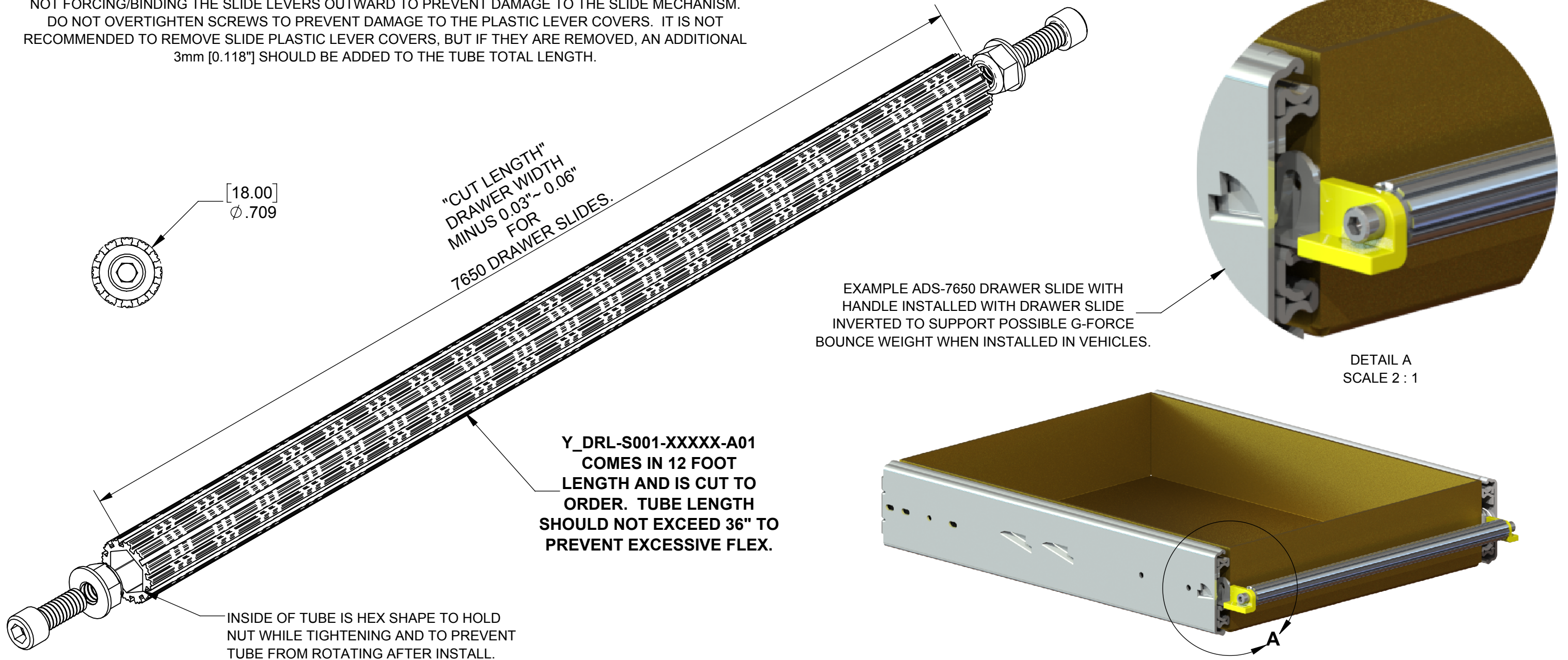


[www.austinhardware.com](http://www.austinhardware.com)



[sales@austinhardware.com](mailto:sales@austinhardware.com)

INSERT FLANGED NUT (WITH NYLON INSERT) IN BOTH ENDS OF PRE CUT HANDLE (FLANGE OUT) AND PLACE BETWEEN TWO MOUNTED SLIDE LEVERS. THE LENGTH OF THE HANDLE SHOULD ALLOW THE TUBE TO SLIGHTLY MOVE BACK AND FORTH (0.01" TO 0.04") ON THE CAPTURED FLANGED NUTS. USE TWO 1/4" - 20 TPI X 5/16" LONG HEX HEAD CAP SCREWS TO FASTEN HANDLE IN PLACE BY PLACING SCREWS THROUGH THE SLIDE LEVER HOLE INTO THE NYLON FLANGED NUTS. ENSURE THE HANDLE IS NOT FORCING/BINDING THE SLIDE LEVERS OUTWARD TO PREVENT DAMAGE TO THE SLIDE MECHANISM. DO NOT OVERTIGHTEN SCREWS TO PREVENT DAMAGE TO THE PLASTIC LEVER COVERS. IT IS NOT RECOMMENDED TO REMOVE SLIDE PLASTIC LEVER COVERS, BUT IF THEY ARE REMOVED, AN ADDITIONAL 3mm [0.118"] SHOULD BE ADDED TO THE TUBE TOTAL LENGTH.

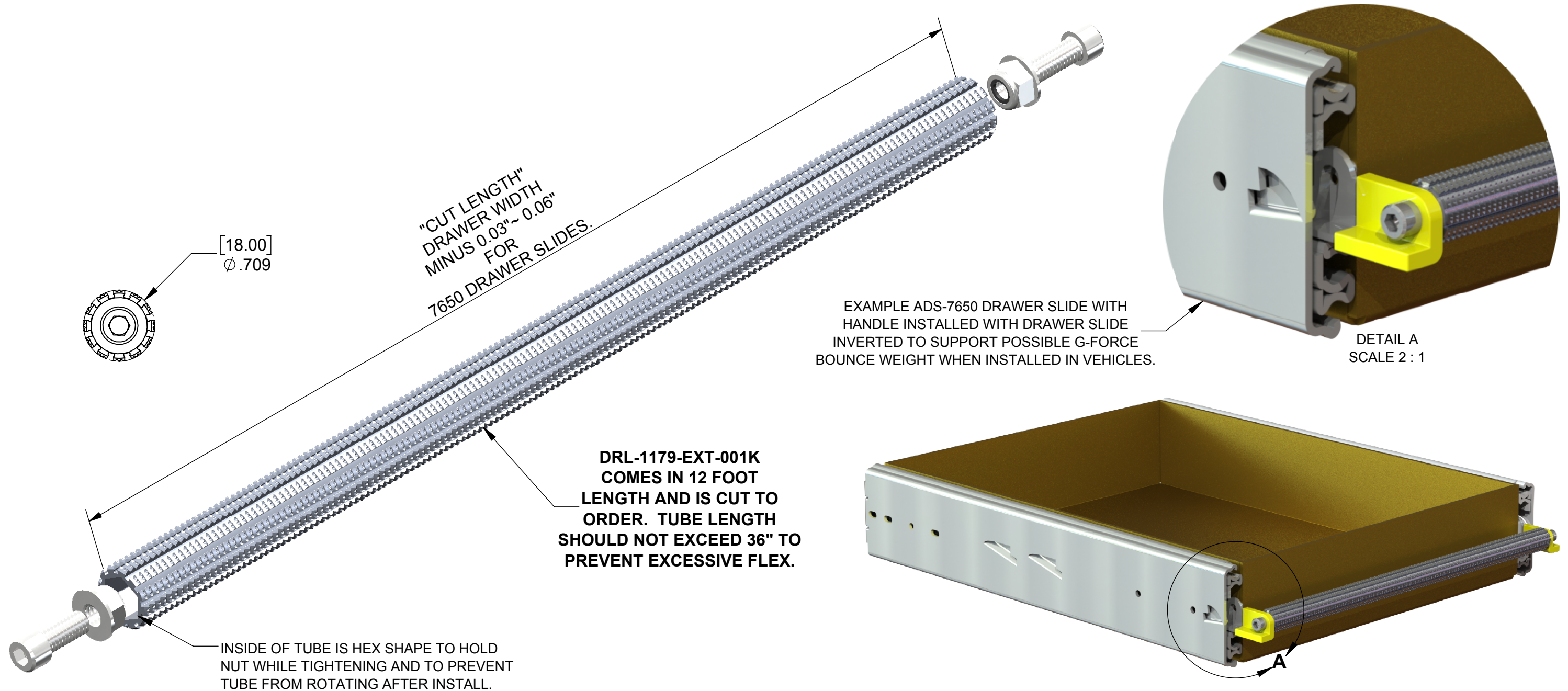


**WEIGHT: 12" EXTRUSION/HARDWARE = 0.196 LBS. (ALUMINUM EXTRUSION = 0.175 LBS./FT.)**  
**MATERIAL: EXTRUDED ALUMINUM/18-8 SS HARDWARE**  
**FINISH: CLEAR ANODIZE**

<p><b>AUSTIN</b> HARDWARE &amp; SUPPLY, INC. SECURING SOLUTIONS FOR YOUR BUSINESS www.austinhardware.com</p>	<p><b>DIMENSIONS MAY CHANGE WITHOUT NOTICE</b></p>	<p>CREATION DATE: 11-16-2017</p>	<p>FILE NAME: Y_DRL-S001-XXXXX-A01</p>
	<p>CREATED BY: rsmith</p>	<p>THIRD ANGLE PROJECTION</p>	<p>DESCRIPTION: DRL ROUND EXT-AL HANDLE ASSEMBLY</p>
<p>PART NUMBER: DRL-S001-XXXXX-A01</p>			<p>REV D</p>



INSERT FLANGED NUT (WITH NYLON INSERT) IN BOTH ENDS OF PRE CUT HANDLE (FLANGE OUT) AND PLACE BETWEEN TWO MOUNTED SLIDE LEVERS. THE LENGTH OF THE HANDLE SHOULD ALLOW THE TUBE TO SLIGHTLY MOVE BACK AND FORTH (0.01" TO 0.04") ON THE CAPTURED FLANGED NUTS. USE TWO 1/4" - 20 TPI X 5/16" LONG HEX HEAD CAP SCREWS TO FASTEN HANDLE IN PLACE BY PLACING SCREWS THROUGH THE SLIDE LEVER HOLE INTO THE NYLON FLANGED NUTS. ENSURE THE HANDLE IS NOT FORCING/BINDING THE SLIDE LEVERS OUTWARD TO PREVENT DAMAGE TO THE SLIDE MECHANISM. DO NOT OVERTIGHTEN SCREWS TO PREVENT DAMAGE TO THE PLASTIC LEVER COVERS. IT IS "NOT" RECOMMENDED TO REMOVE SLIDE PLASTIC LEVER COVERS, BUT IF THEY ARE REMOVED, AN ADDITIONAL 3mm [0.118"] SHOULD BE ADDED TO THE TUBE TOTAL LENGTH.



**WEIGHT: 12" LENGTH PLUS HARDWARE = 0.21 LBS. (12" EXTRUSION = 0.175 LBS./FOOT)**  
**MATERIAL: EXTRUDED ALUMINUM/18-8 SS HARDWARE**  
**FINISH: CLEAR ANODIZE**

EXAMPLE ADS-7650 DRAWER SLIDE WITH HANDLE INSTALLED WITH DRAWER SLIDE INVERTED TO SUPPORT POSSIBLE G-FORCE BOUNCE WEIGHT WHEN INSTALLED IN VEHICLES.

DETAIL A  
SCALE 2 : 1

**DRL-1179-EXT-001K  
 COMES IN 12 FOOT  
 LENGTH AND IS CUT TO  
 ORDER. TUBE LENGTH  
 SHOULD NOT EXCEED 36" TO  
 PREVENT EXCESSIVE FLEX.**

INSIDE OF TUBE IS HEX SHAPE TO HOLD NUT WHILE TIGHTENING AND TO PREVENT TUBE FROM ROTATING AFTER INSTALL.

**DIMENSIONS MAY CHANGE WITHOUT NOTICE**



CREATION DATE: **11-16-2017**

CREATED BY: **rsmith**



FILE NAME: **Y\_DRL-K001-XXXXX-A01**

DESCRIPTION: **DRL ROUND (KNURLED) PULL HANDLE**

PART NUMBER: **DRL-K001-XXXXX-A01**

REV **C**